



## Blowers And Gas Boosters

These centrifugal blowers and gas boosters are of robust construction and designed to run continuously under full load conditions handling a wide variety of gases or air. The shaft is sealed to isolate the bearings. Machines have a cast iron bearing housing, with aluminium volute casing and impeller.

Boosters can be supplied as a basic unit with baseplate and motor, or as a package with pressure switches and control panel wired and fitted as shown in the photograph, to comply with IGEM/UP/2.

All options are available as duplex sets with one unit on standby, and packaged with approved controls.

Compliant to : IGEM / UP / 2

ATEX DIRECTIVE : 2014 / 34 / EU

MACHINERY DIRECTIVE : 2006 / 42 / EC

BSEN 8487 : 2007

## Model 876A

### Air Blowers:

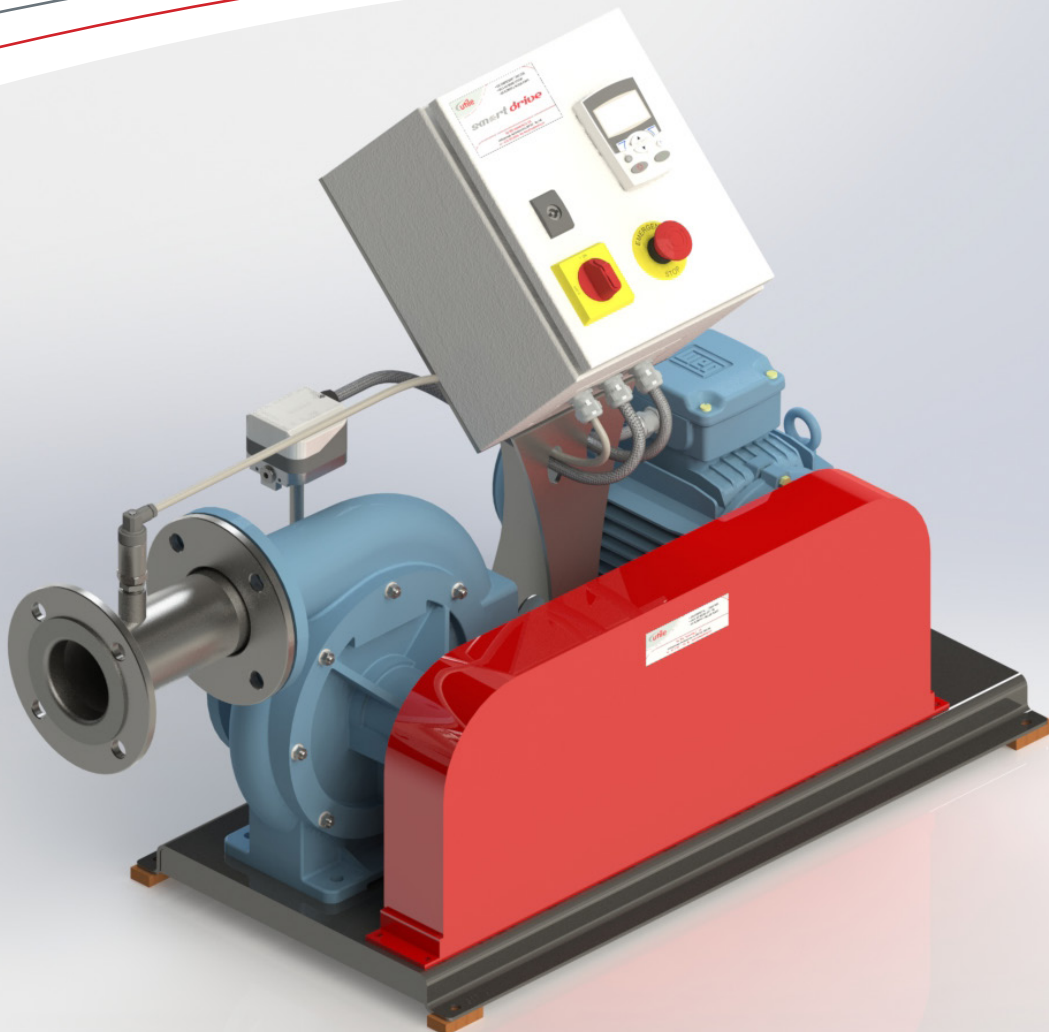
Aeration  
Burners

### Gas Boosters:

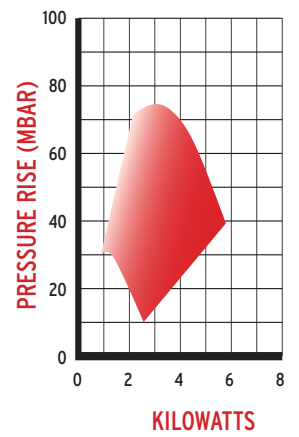
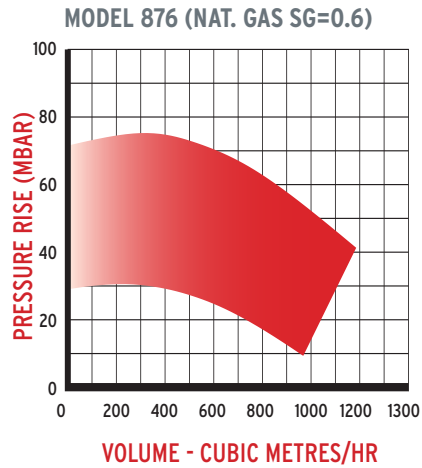
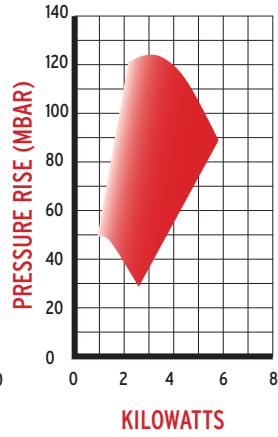
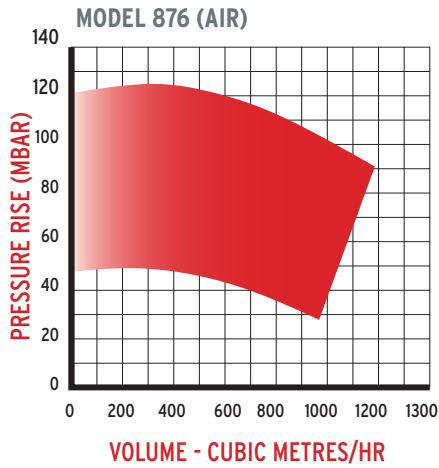
Burners  
Gas Engines  
Waste Gas Burners  
Siloxane & H<sub>2</sub>S Filters

### Ancillary Equipment:

- Inlet low pressure switches
- Isolating valves
- Inlet and discharge flexible connectors, inlet non-return valves, discharge check valves
- Acoustic/weatherproof enclosures are available
- Motors and ancillaries available for zoned areas
- Filter silencer for blowers/exhausters
- Starter/control panel

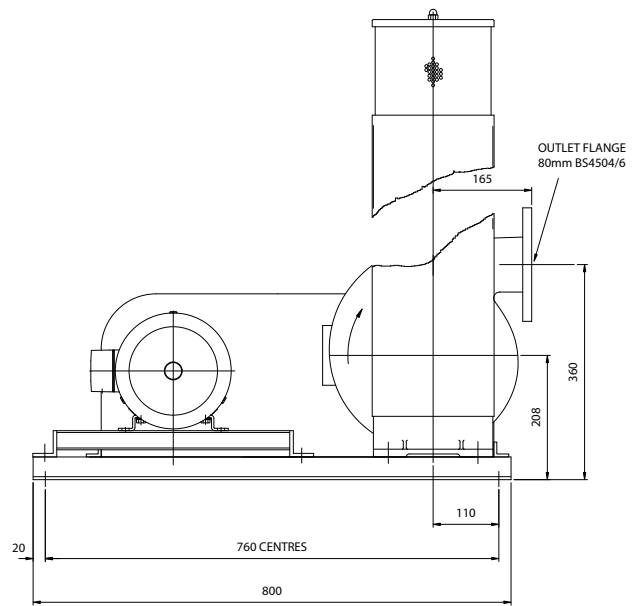
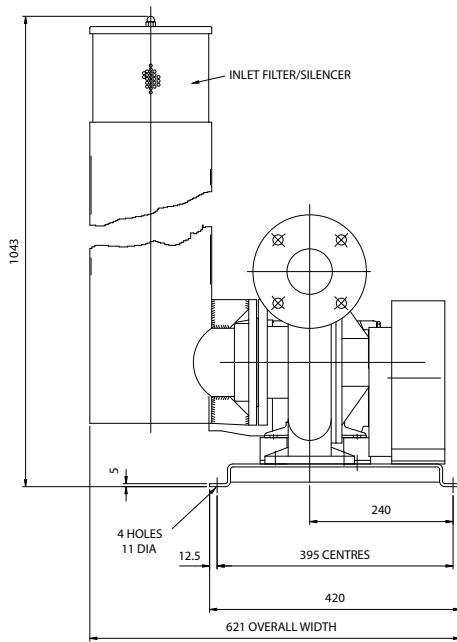


# Dimensions & Performances



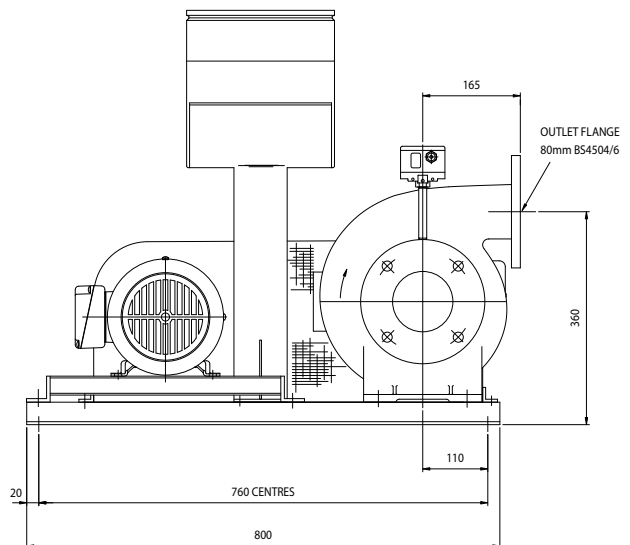
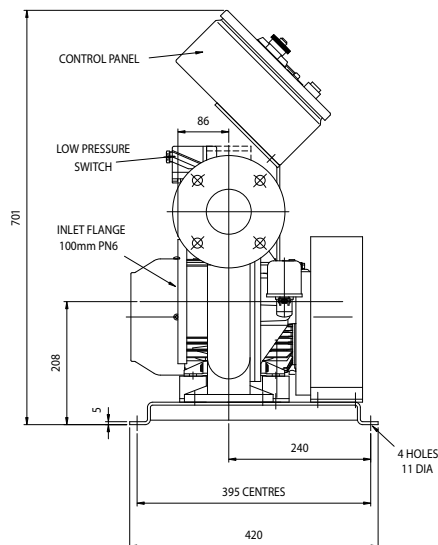
## BLOWER SET

kW	Weight (Kgs)
1.10	59.8
1.50	62.8
2.20	64.8
3.00	77.0
4.00	86.0
5.50	99.0
7.50	99.0



## GAS BOOSTER SET

kW	Weight (Kgs)
1.10	58.9
1.50	61.9
2.20	63.9
3.00	76.0
4.00	85.0
5.50	98.0
7.50	98.0



Whilst the details contained in this leaflet are representative of the machines, the actual products may differ from the illustrations due to improvements in design. Certified copies and performance curves will be supplied on request.